

# NUTRITION SENSITIVE SCHOOL MEALS

Nearly every country in the world has some forms of **school meal** programmes in place.








School meal programmes are the most common **social safety net** in the world.

An estimated **368 million children** receive a meal at school every day, both in developing countries and in affluent countries.

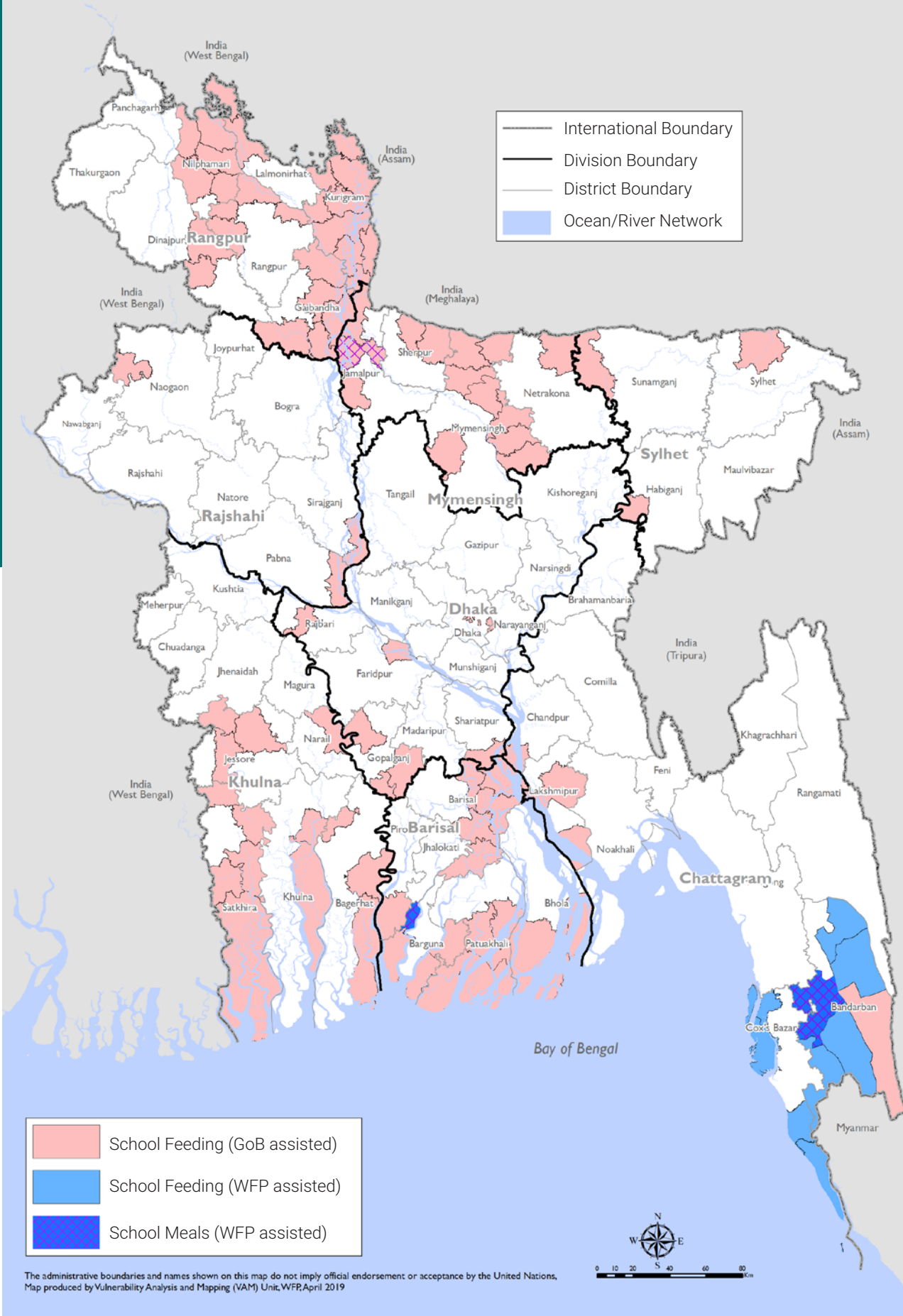
The global investment in school meals is around **US\$75 billion a year**.

The **Mid-day Meal Scheme in India** is the largest school meal programme in the world, as it feeds 105 million children every day.

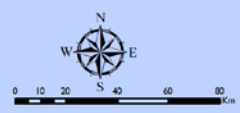
## Beneficiaries and potential benefits of Home Grown School Meals (HGSM)

School Meals					
	Children	>	<table border="1"> <tr> <td>Access to education</td> <td>Better nutrition and health</td> </tr> </table>	Access to education	Better nutrition and health
Access to education	Better nutrition and health				
	Households	>	<table border="1"> <tr> <td>Value transfer to families</td> <td>Greater future incomes</td> </tr> </table>	Value transfer to families	Greater future incomes
Value transfer to families	Greater future incomes				
	Governments	>	<table border="1"> <tr> <td>Better education outcomes</td> <td>Reduced health and social protection costs</td> </tr> </table>	Better education outcomes	Reduced health and social protection costs
Better education outcomes	Reduced health and social protection costs				
Home Grown School Meals					
	<b>Children</b> SDGs 1, 2, 5, 8, 10	>	<table border="1"> <tr> <td> <ul style="list-style-type: none"> <li>• Access to education</li> <li>• Better nutrition and health</li> </ul> </td> <td> <ul style="list-style-type: none"> <li>• Healthier eating habits</li> <li>• Enhanced dietary diversity</li> </ul> </td> </tr> </table>	<ul style="list-style-type: none"> <li>• Access to education</li> <li>• Better nutrition and health</li> </ul>	<ul style="list-style-type: none"> <li>• Healthier eating habits</li> <li>• Enhanced dietary diversity</li> </ul>
<ul style="list-style-type: none"> <li>• Access to education</li> <li>• Better nutrition and health</li> </ul>	<ul style="list-style-type: none"> <li>• Healthier eating habits</li> <li>• Enhanced dietary diversity</li> </ul>				
	<b>Households and communities</b> SDGs 1, 2, 5, 8, 10	>	<table border="1"> <tr> <td> <ul style="list-style-type: none"> <li>• Value transfer to families</li> <li>• Employment opportunities</li> <li>• Engagement and ownership</li> </ul> </td> <td> <ul style="list-style-type: none"> <li>• Enhanced dietary diversity</li> <li>• Healthier eating habits</li> </ul> </td> </tr> </table>	<ul style="list-style-type: none"> <li>• Value transfer to families</li> <li>• Employment opportunities</li> <li>• Engagement and ownership</li> </ul>	<ul style="list-style-type: none"> <li>• Enhanced dietary diversity</li> <li>• Healthier eating habits</li> </ul>
<ul style="list-style-type: none"> <li>• Value transfer to families</li> <li>• Employment opportunities</li> <li>• Engagement and ownership</li> </ul>	<ul style="list-style-type: none"> <li>• Enhanced dietary diversity</li> <li>• Healthier eating habits</li> </ul>				
	<b>Farmers, processors and traders</b> SDGs 1, 2, 5, 8, 10	>	<table border="1"> <tr> <td> <ul style="list-style-type: none"> <li>• Access to markets</li> <li>• Access to productive inputs and credit</li> <li>• Income opportunities</li> </ul> </td> <td> <ul style="list-style-type: none"> <li>• Strengthened capacity</li> <li>• Increased dietary diversity</li> <li>• More resilient agriculture</li> <li>• Stronger local food systems</li> </ul> </td> </tr> </table>	<ul style="list-style-type: none"> <li>• Access to markets</li> <li>• Access to productive inputs and credit</li> <li>• Income opportunities</li> </ul>	<ul style="list-style-type: none"> <li>• Strengthened capacity</li> <li>• Increased dietary diversity</li> <li>• More resilient agriculture</li> <li>• Stronger local food systems</li> </ul>
<ul style="list-style-type: none"> <li>• Access to markets</li> <li>• Access to productive inputs and credit</li> <li>• Income opportunities</li> </ul>	<ul style="list-style-type: none"> <li>• Strengthened capacity</li> <li>• Increased dietary diversity</li> <li>• More resilient agriculture</li> <li>• Stronger local food systems</li> </ul>				
	<b>Governments</b> SDGs 1, 2, 4, 5, 8, 10, 17	>	<table border="1"> <tr> <td> <ul style="list-style-type: none"> <li>• Better education outcomes</li> <li>• More inclusive education and social protection systems</li> </ul> </td> <td> <ul style="list-style-type: none"> <li>• Increased and diversified agriculture</li> <li>• Increased economic activity</li> </ul> </td> </tr> </table>	<ul style="list-style-type: none"> <li>• Better education outcomes</li> <li>• More inclusive education and social protection systems</li> </ul>	<ul style="list-style-type: none"> <li>• Increased and diversified agriculture</li> <li>• Increased economic activity</li> </ul>
<ul style="list-style-type: none"> <li>• Better education outcomes</li> <li>• More inclusive education and social protection systems</li> </ul>	<ul style="list-style-type: none"> <li>• Increased and diversified agriculture</li> <li>• Increased economic activity</li> </ul>				

# School Feeding Programme in Bangladesh, 2019



	School Feeding (GoB assisted)
	School Feeding (WFP assisted)
	School Meals (WFP assisted)



The administrative boundaries and names shown on this map do not imply official endorsement or acceptance by the United Nations. Map produced by Vulnerability Analysis and Mapping (VAM) Unit, WFP, April 2019.